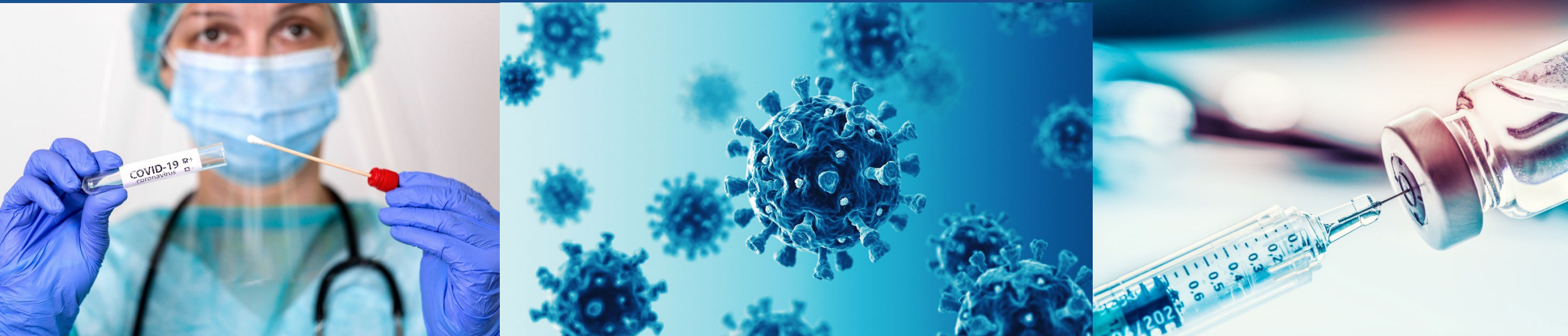


Behavioral Health - Environmental Health – Office of Agency Director - Public Health  
Emergency Medical Services - Homeless Care & Coordination - HealthPAC  
Center for Healthy Schools & Communities



# Board of Supervisors COVID-19 Update

May 10, 2022



Alameda County  
Health Care Services Agency

Behavioral Health | Environmental Health | Office of Agency Director | Public Health

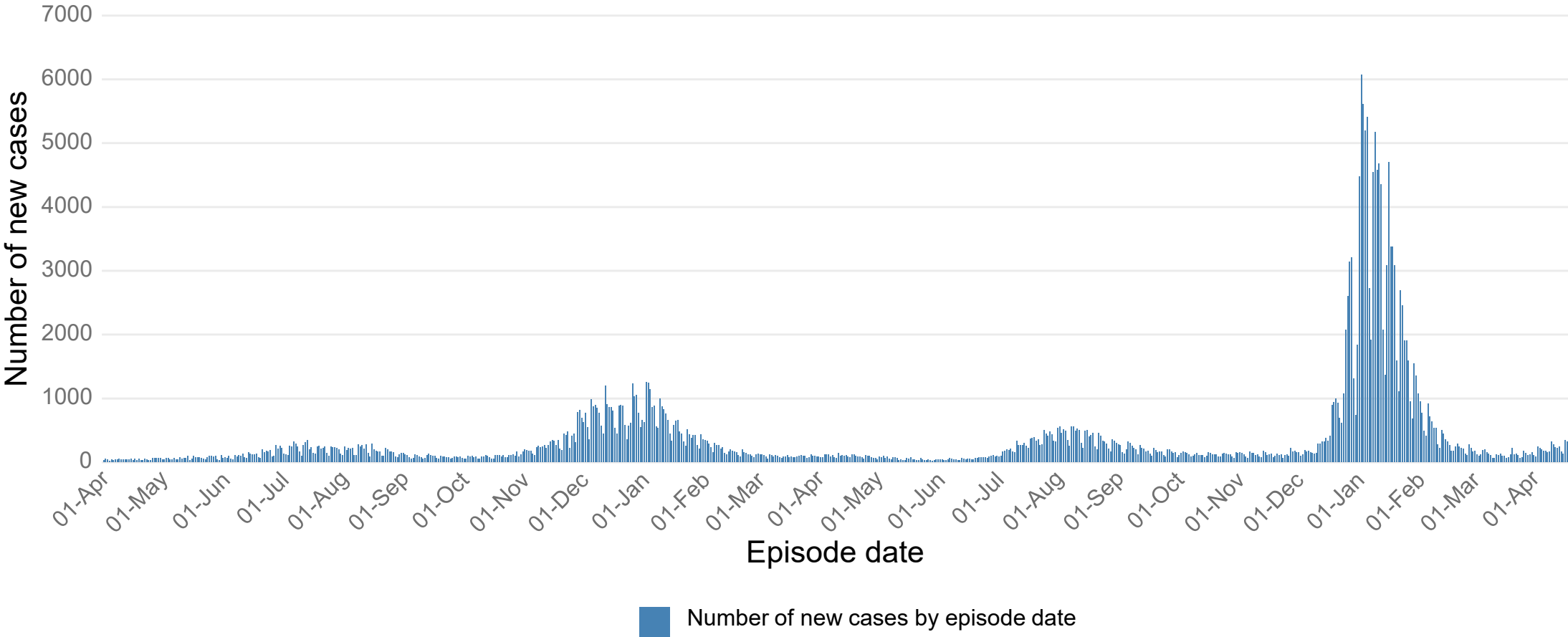
# Data & Policy Update

## Epidemic Data Key Points

- 26 cases per 100,000 residents per day
- 6% overall test positivity
- ~10,000 reported lab tests per day
- 50 hospitalized, 5 ICU
- 289 deaths since January 1st
- BA.2 circulating with BA.2.12.1 emerging

Visit the COVID-19 [dashboard](#) for more data

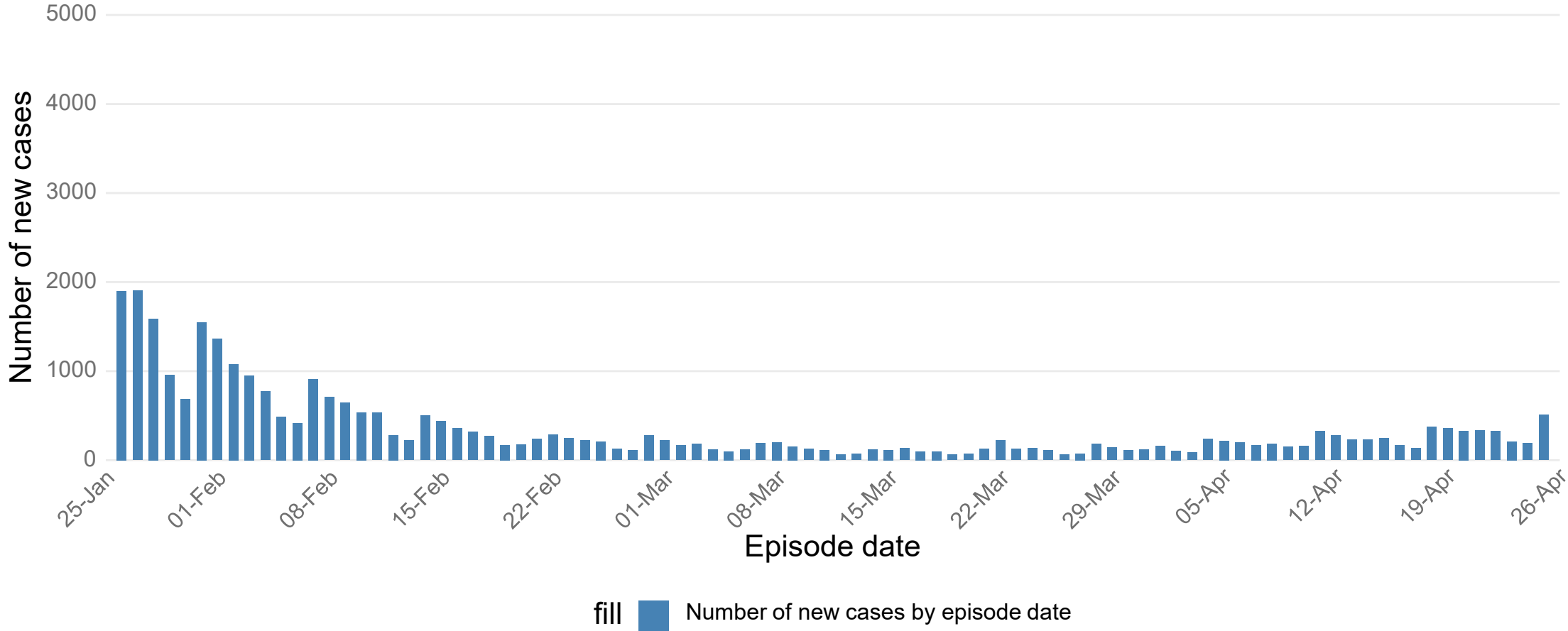
# New Alameda County COVID-19 Cases by episode date, 2020-2022



Includes City of Berkeley

Source: CalREDIE Data Distribution Portal download April 28, 2022

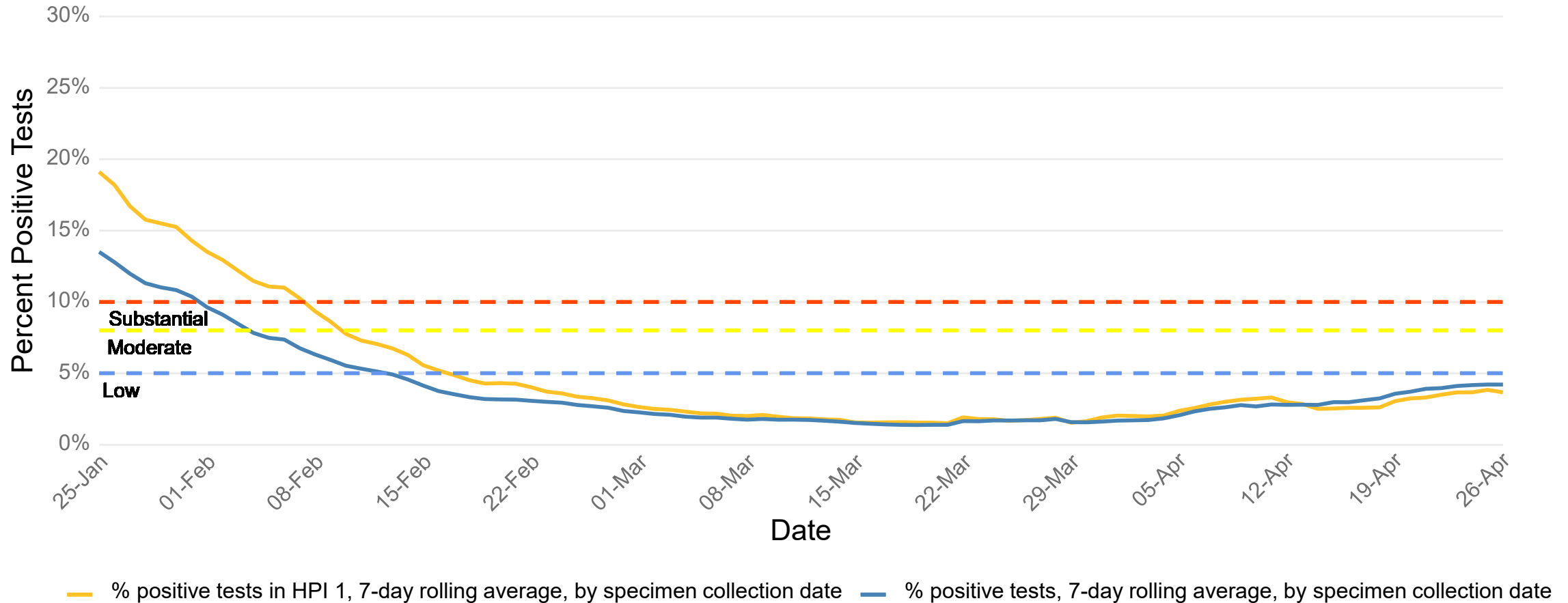
# New Alameda County COVID-19 Cases by episode date



Includes City of Berkeley

Source: CalREDIE Data Distribution Portal download May 03, 2022

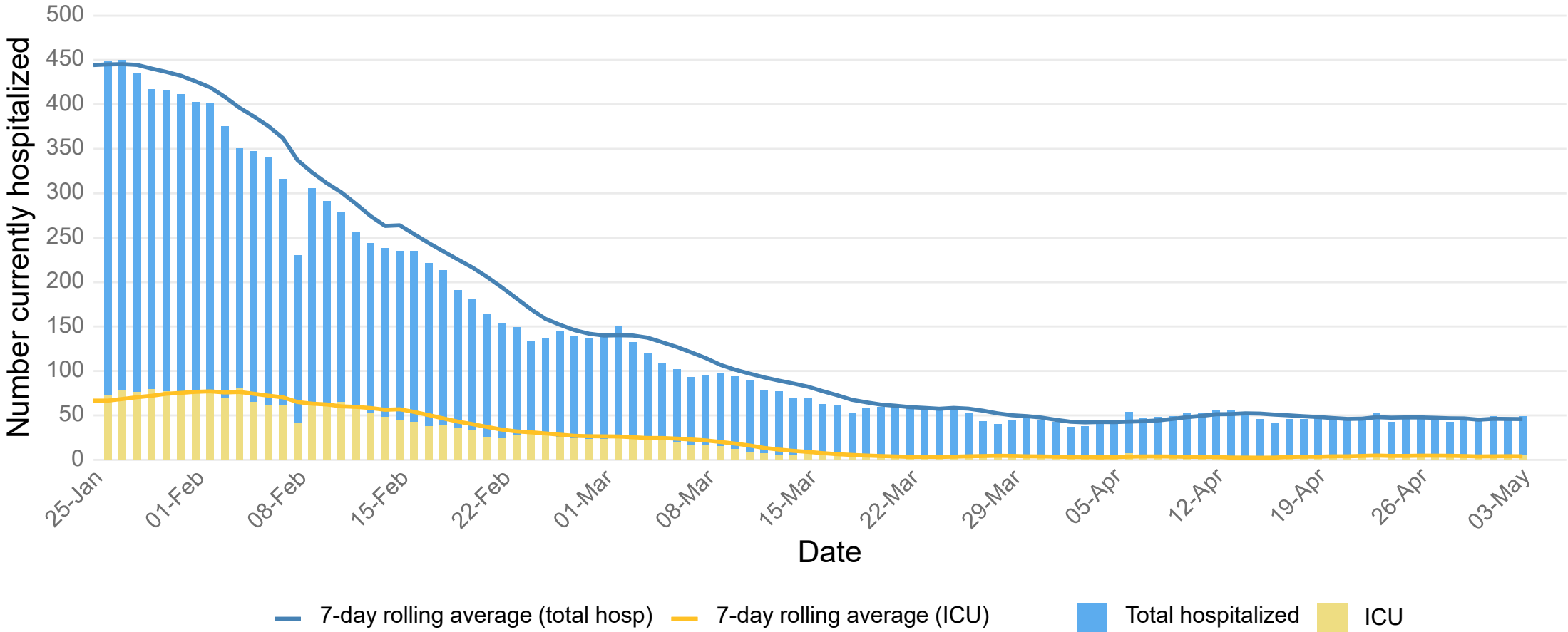
# Alameda County COVID-19 Test Positivity



Includes City of Berkeley

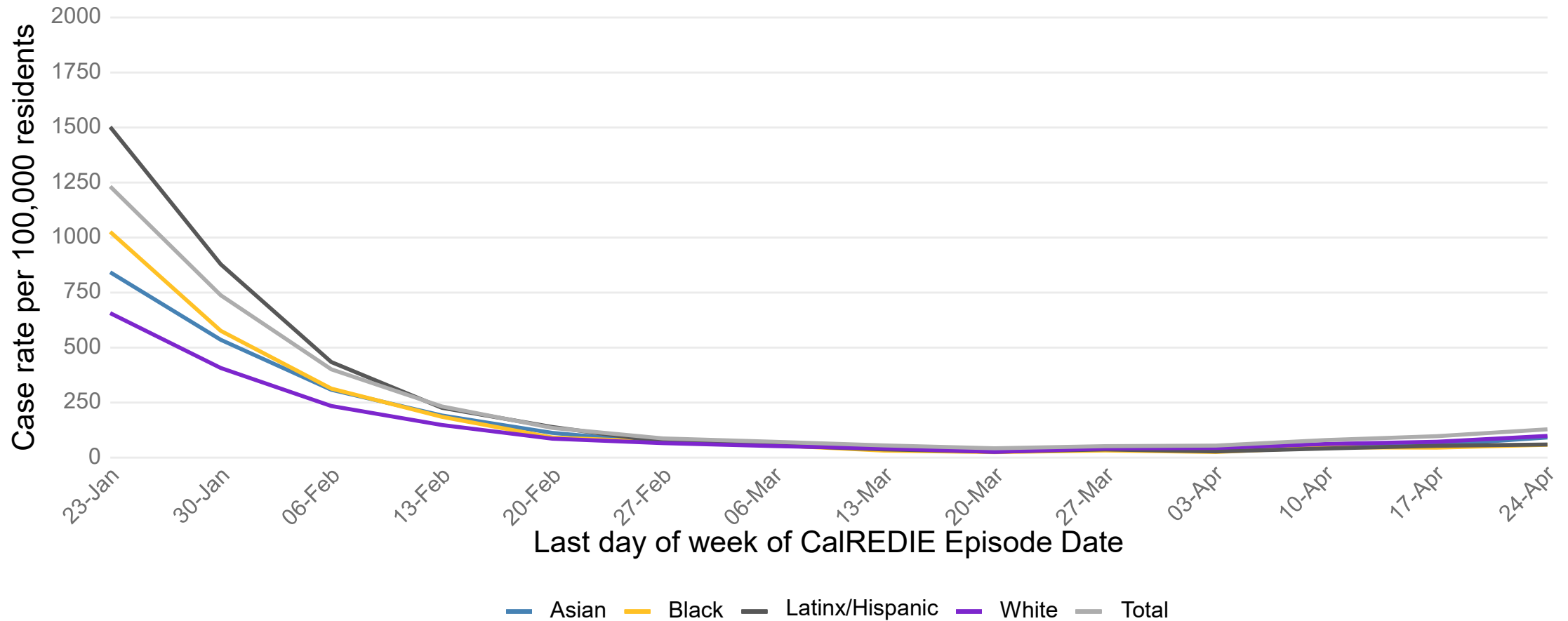
Source: CalREDIE Data Distribution Portal download May 03, 2022

# Patients with COVID-19 Currently Hospitalized in Alameda County



Source: California Department of Public Health

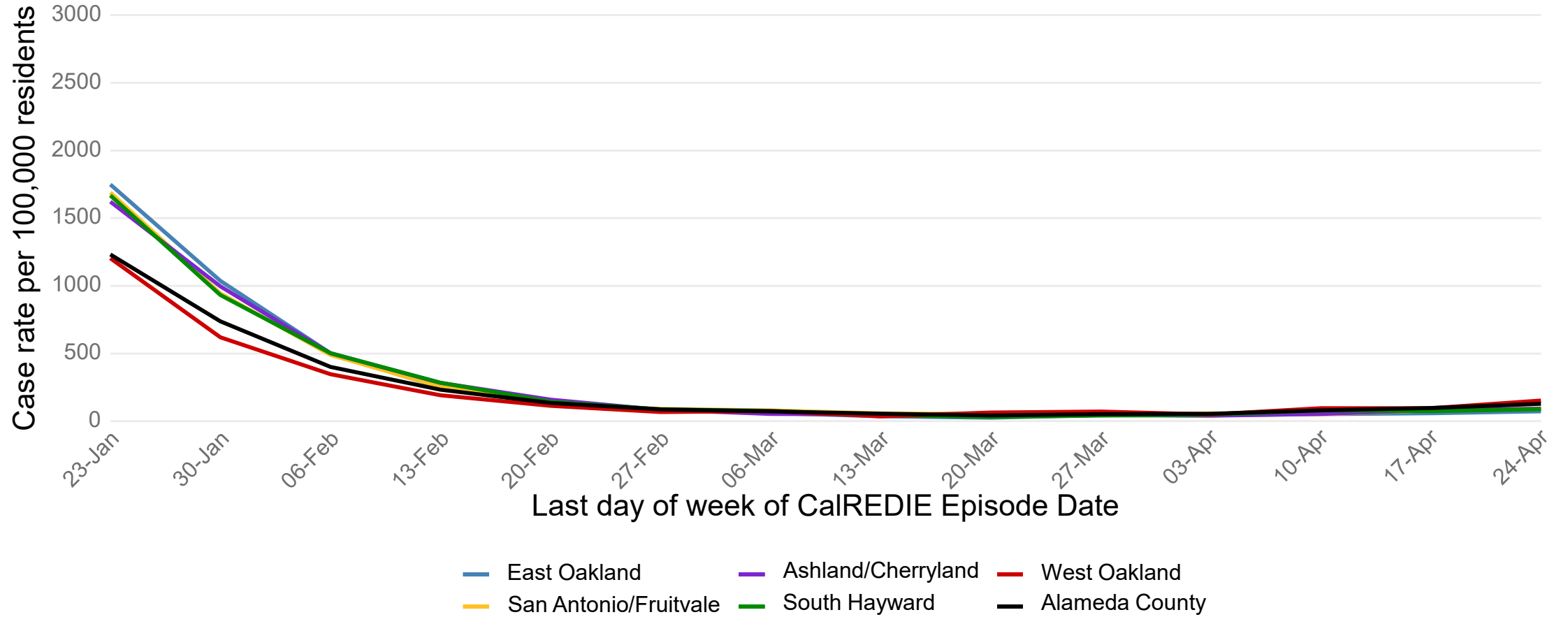
# Alameda County COVID-19 weekly case rate



Includes City of Berkeley  
 Source: CalREDIE Data Distribution Portal May 03, 2022

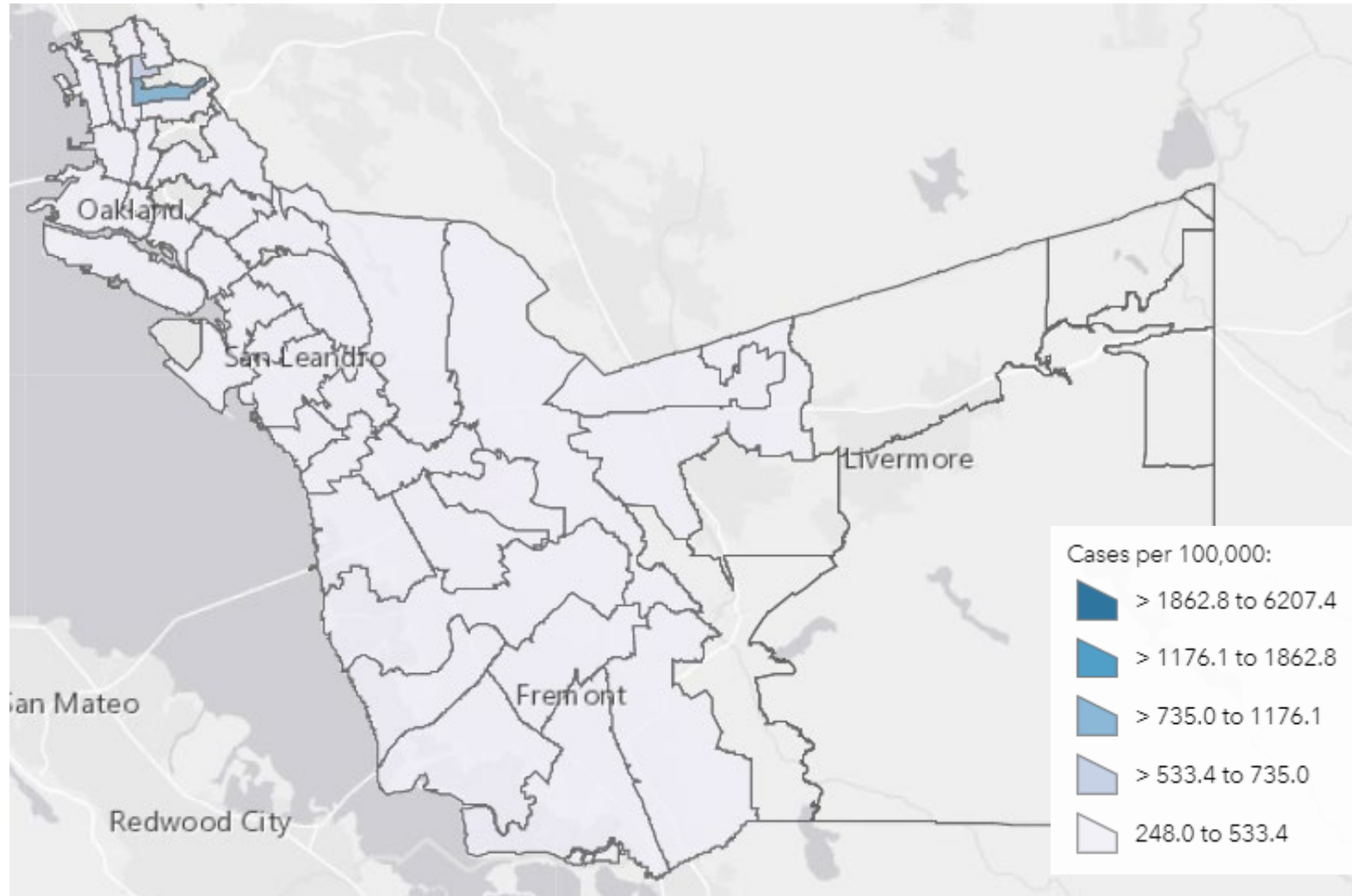


# Alameda County COVID-19 weekly case rates

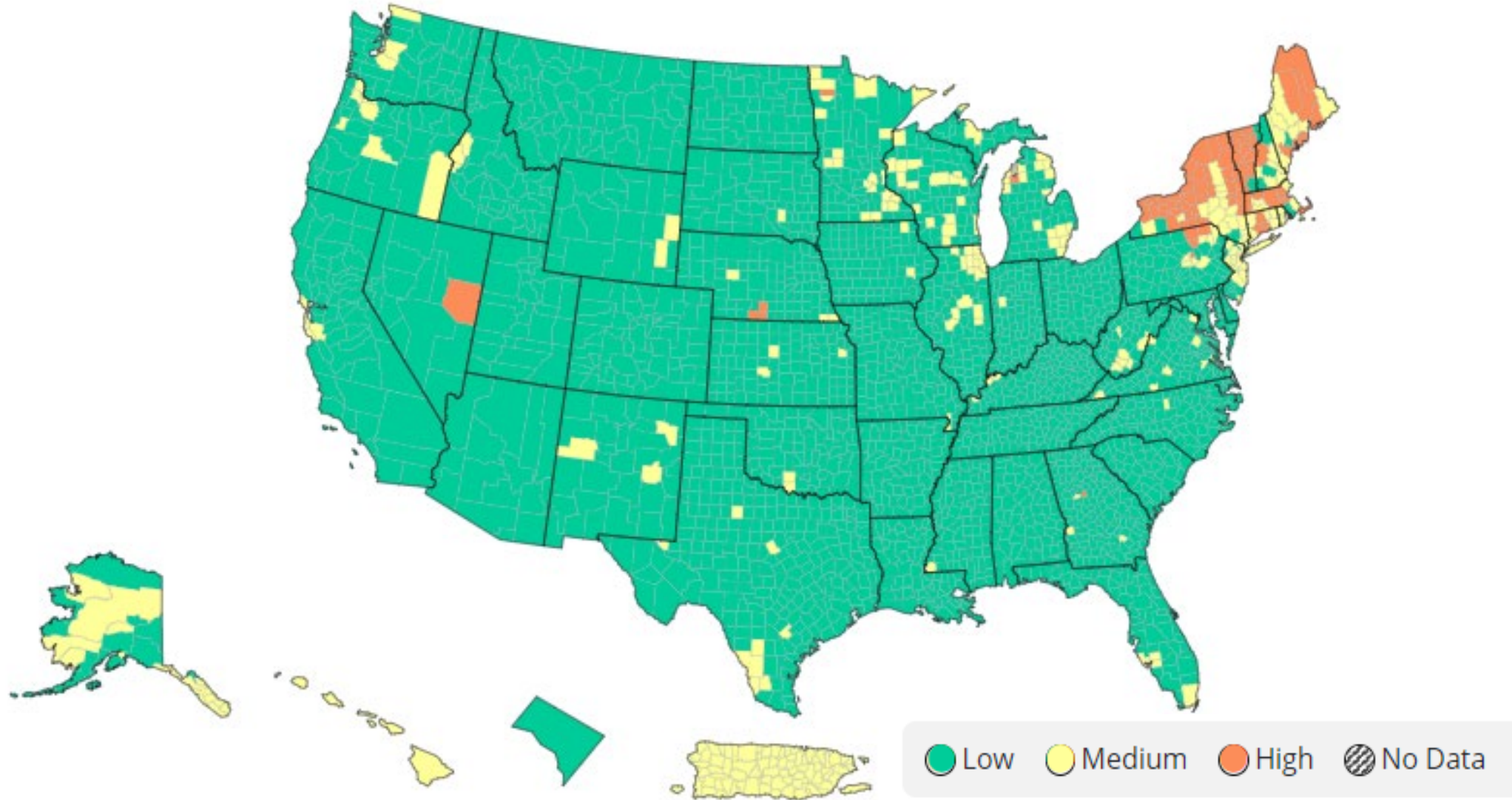


Alameda County includes City of Berkeley.  
Source: CalREDIE download May 03, 2022

# COVID-19 28-day case rates by Zip Code, 5/8/22



# CDC COVID-19 Community Levels in US by County, 5/5/22





% at Least One Dose

**90.2%**

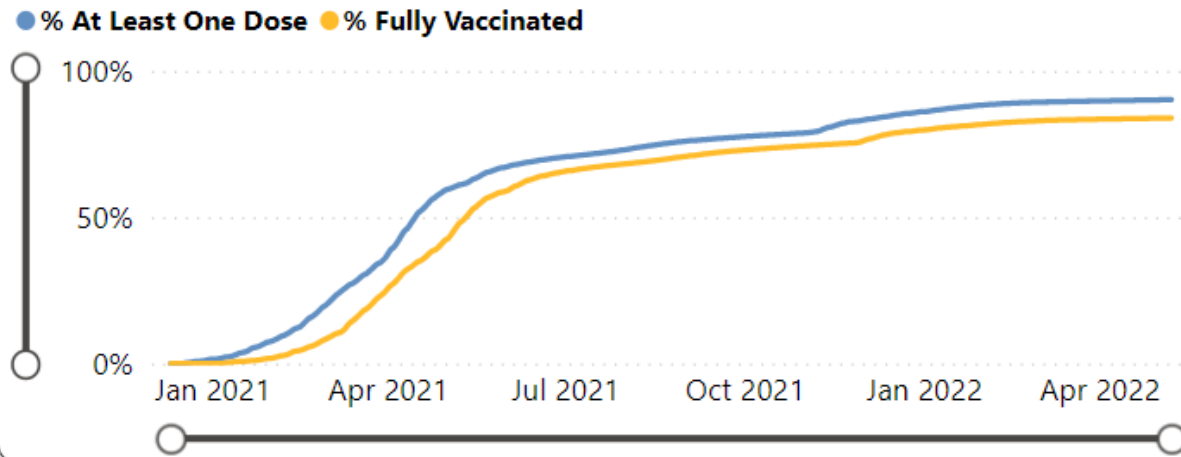
[See Counts](#)

% Fully Vaccinated

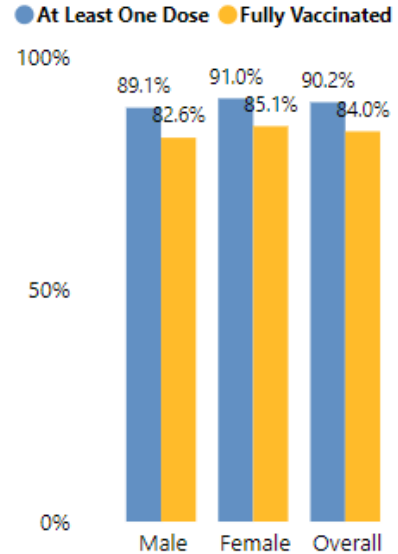
**84.0%**

[See Boosters](#)

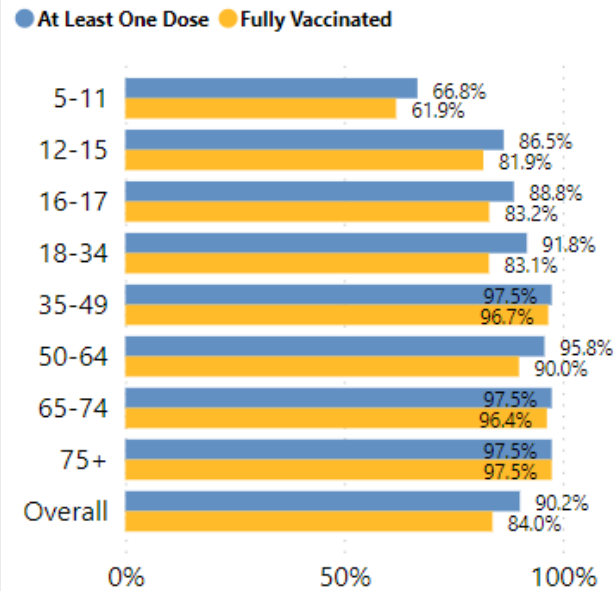
### Alameda County Cumulative Percentage of Vaccine Doses



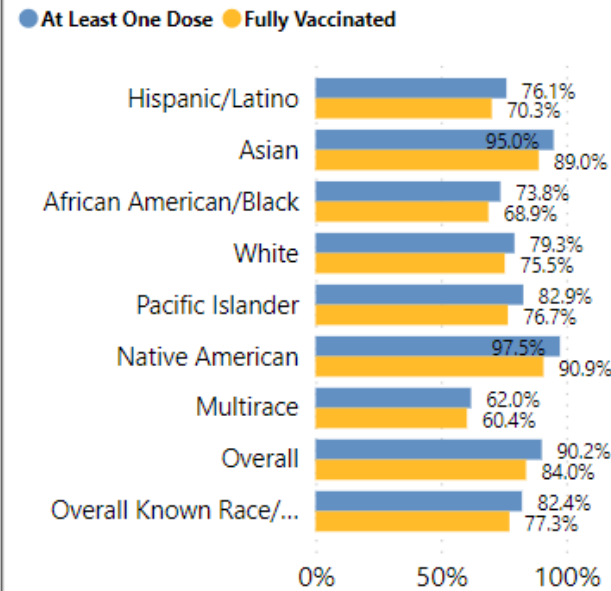
### Doses by Gender (% of population)



### Doses by Age Group (% of population)



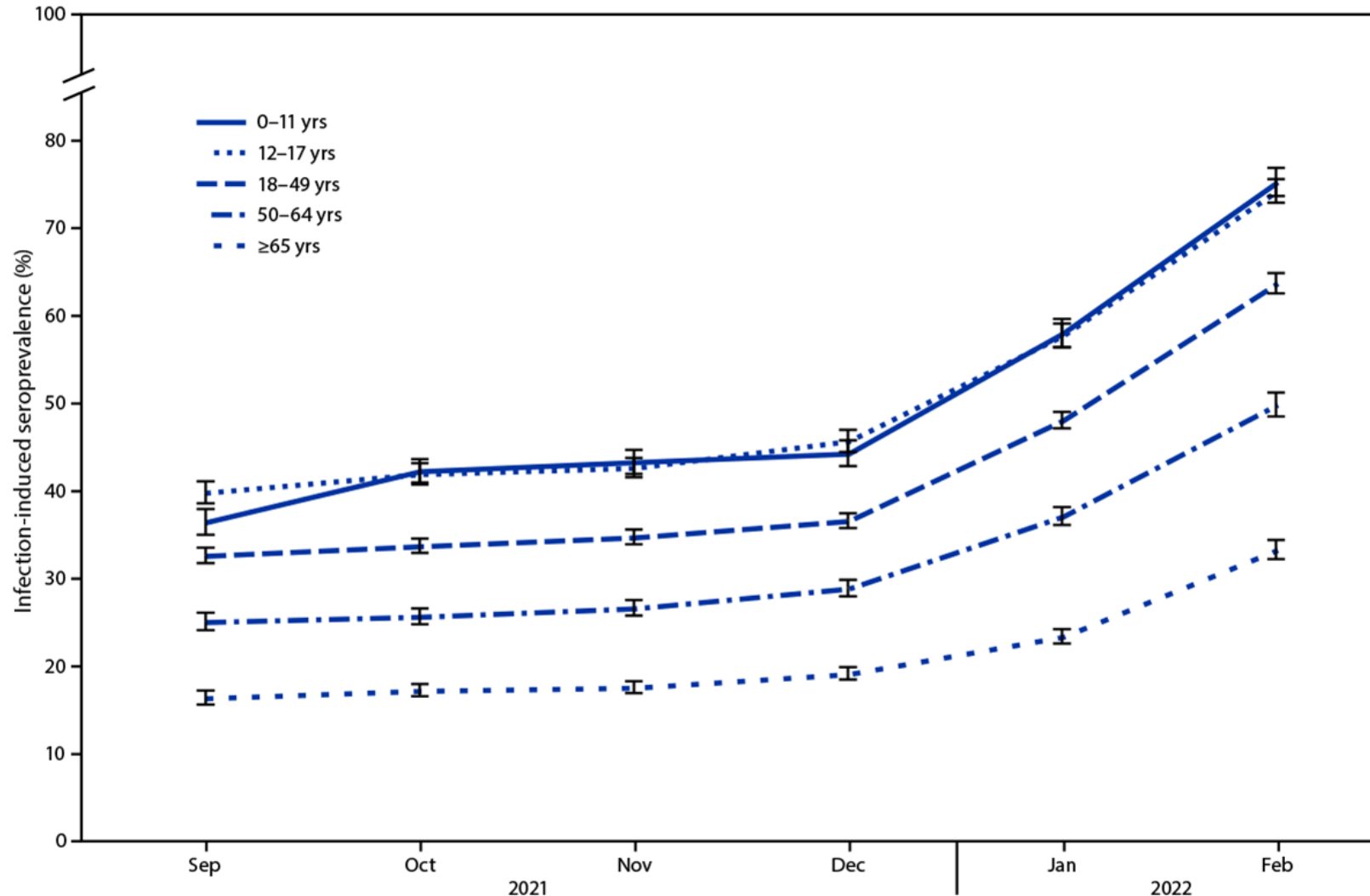
### Doses by Race/Ethnicity (% of population)



### % of population

Place	At Least One Dose	Fully Vaccinated
Alameda	90.6%	85.6%
Albany	92.4%	86.3%
Ashland	75.6%	70.8%
Berkeley	97.5%	93.2%
Castro Valley	91.0%	85.0%
Cherryland	80.3%	74.9%
Dublin	92.6%	85.1%
Emeryville	87.1%	79.9%
Fairview	85.0%	80.7%
Fremont	92.7%	85.6%
Hayward	88.4%	82.3%
Hayward Acres	77.1%	71.7%
Livermore	84.6%	78.7%
Newark	87.2%	81.0%
Oakland	88.0%	81.8%
Piedmont	97.5%	97.5%
Pleasanton	94.7%	88.0%
Remainder of County	62.1%	57.9%
San Leandro	90.9%	85.8%
San Lorenzo	88.6%	83.9%
Sunol	90.9%	85.3%
Union City	88.5%	82.7%

# Seroprevalence of infection-induced SARS-CoV-2 antibodies, by age group — United States, September 2021–February 2022



Error bars represent 95% CIs at each time point.

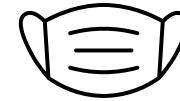
[Seroprevalence of Infection-Induced SARS-CoV-2 Antibodies — United States, September 2021–February 2022 | MMWR \(cdc.gov\)](https://www.cdc.gov/mmwr/preview/mmwrhtml/seroprevalence-sars-cov-2-antibodies-202109-20220201a.htm)

# Update on masking

- Masks are strongly recommended for all in indoor settings
- Considerations for possible mask requirement
  - Worsening hospital impacts
  - Re-emergence of COVID-19 disparities
  - Post COVID syndrome?
- Reasons to continue with recommendation
  - High seroprevalence and high vaccination rates leading to high immunity levels
  - COVID-19 is not going away – we will all be exposed repeatedly
  - High quality masks offer protection for those that need or want it
  - Must use less restrictive approaches first

# Masking – cont.

- Upgrade your mask for the best possible protection – KF94, KN95 or N95
- COVID Division has purchased 126,000 KN95 masks
  - 26,000 are child/small size
- Working to distribute masks ASAP via CBOs and other partners
- Coordinating with test kit distribution where possible



# Update on COVID-19 Treatment

- Medication is available for people with COVID at high risk\* of severe illness
  - Paxlovid, Remdesivir, Molnupravir, Bebtelivomab
- Low-barrier treatment options in Alameda County:
  - CDPH Optum Serve mobile test sites (Paxlovid)
  - COVID Division treatment call center in planning
  - COVID Division working with local testing providers to offer treatment
- Test-to-treat resources also linked at [covid.gov](https://www.covid.gov)
- Contact your medical provider first if possible



\* [Underlying Medical Conditions Associated with Higher Risk for Severe COVID-19: Information for Healthcare Professionals | CDC](#)



# Communications

# Hyperlocal Vaccine Ad Campaign (Round 2)

- **African American/Black; Latinx Audiences:** Parents of children; Young adults
  - Informed by local data on vaccine uptake and gaps by race/ethnicity, age, and location
  - Ads direct to [alamedacountyvax.org](https://alamedacountyvax.org)-->[Vaccine registration](#)
- **Ads Served to Black and Latinx in English and Spanish in Priority Zip-codes:** Digital banners; Live cable and on-demand; Social media
- **Ads Reaching Black and Latinx in English and Spanish:** News media e-blasts; Digital video; Radio; Newspapers
- **Over \$190k placement: Digital ads launch early May; Remaining ads launch mid-May**

# I didn't wanna miss...

...getting a summer job.  
So glad I got vaccinated!



[FIND A COVID VACCINE SITE NEAR YOU](#)



La meta es seguir protegiéndolos contra el COVID-19

[ENCUENTRE UN CENTRO DE VACUNAS](#)



# Mom, we need to talk.

I want to get the COVID vaccine.

[FIND A COVID VACCINE SITE NEAR YOU](#)



# Dad, we need to talk.

I want to get the COVID vaccine.

[FIND A COVID VACCINE SITE NEAR YOU](#)



# COVID aún NO ha terminado. ¡Sigamos protegiéndonos!



[¡VACÚNESE HOY!](#)



# Having grandma in my life means everything to me.



[FIND A COVID VACCINE SITE NEAR YOU](#)



# Staying Healthy

- Get vaccinated and boosted if eligible
- Wear high-quality well-fitting masks in indoor public spaces
- Keep gatherings small and outside when possible
- Stay home if sick
- If you test positive for COVID-19 you may benefit from treatment

# STAY INFORMED

# THANK YOU!



JOIN THE CONVERSATION

**@Dare2BWell**



## Community Advisory Group

Second Tuesday at 5:30 PM (monthly)

<https://covid-19.acgov.org/community-advisory-group>



## Alameda County Health Care Services Agency Bi-Weekly COVID-19 Updates

Includes presentations & newsletters

<https://covid-19.acgov.org/response>



## COVID-19 Website

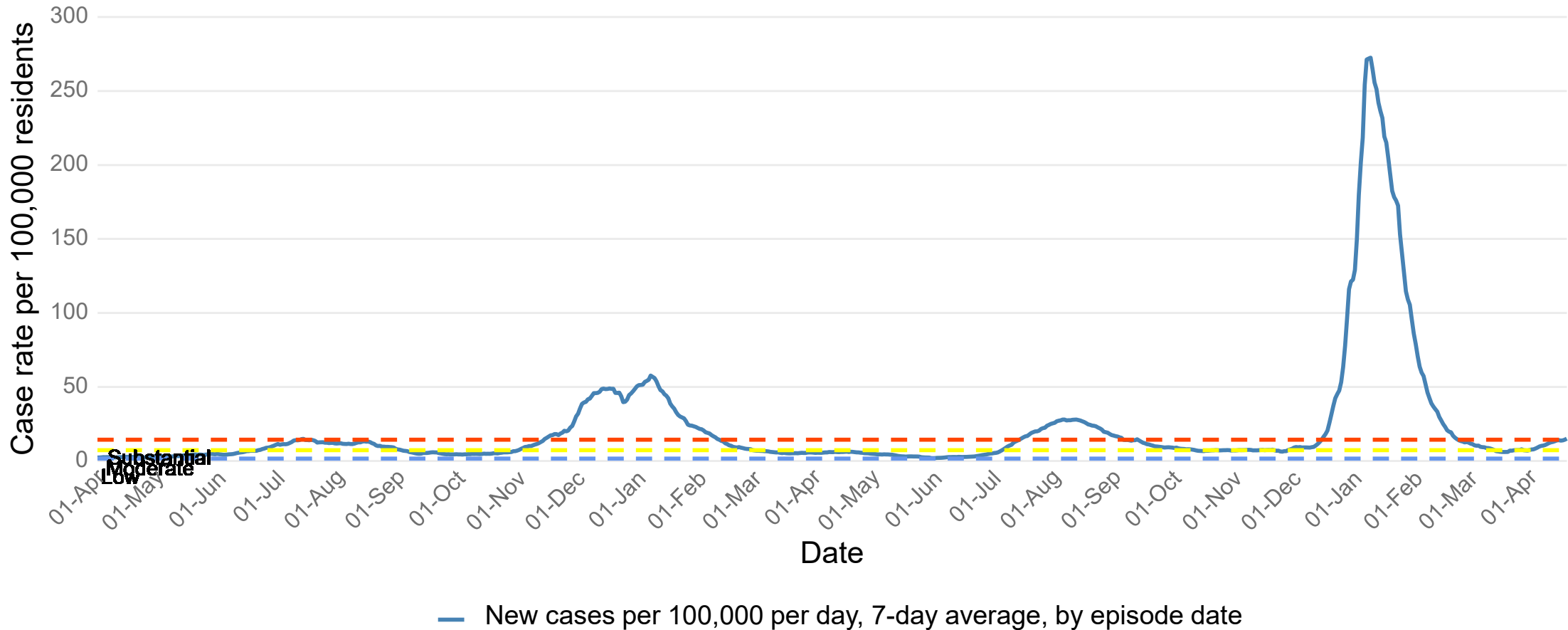
Dashboard, Testing, Vaccines, and More

<https://covid-19.acgov.org>



# Extra Slides

# Alameda County COVID-19 Daily Case Rate, 2020-2022

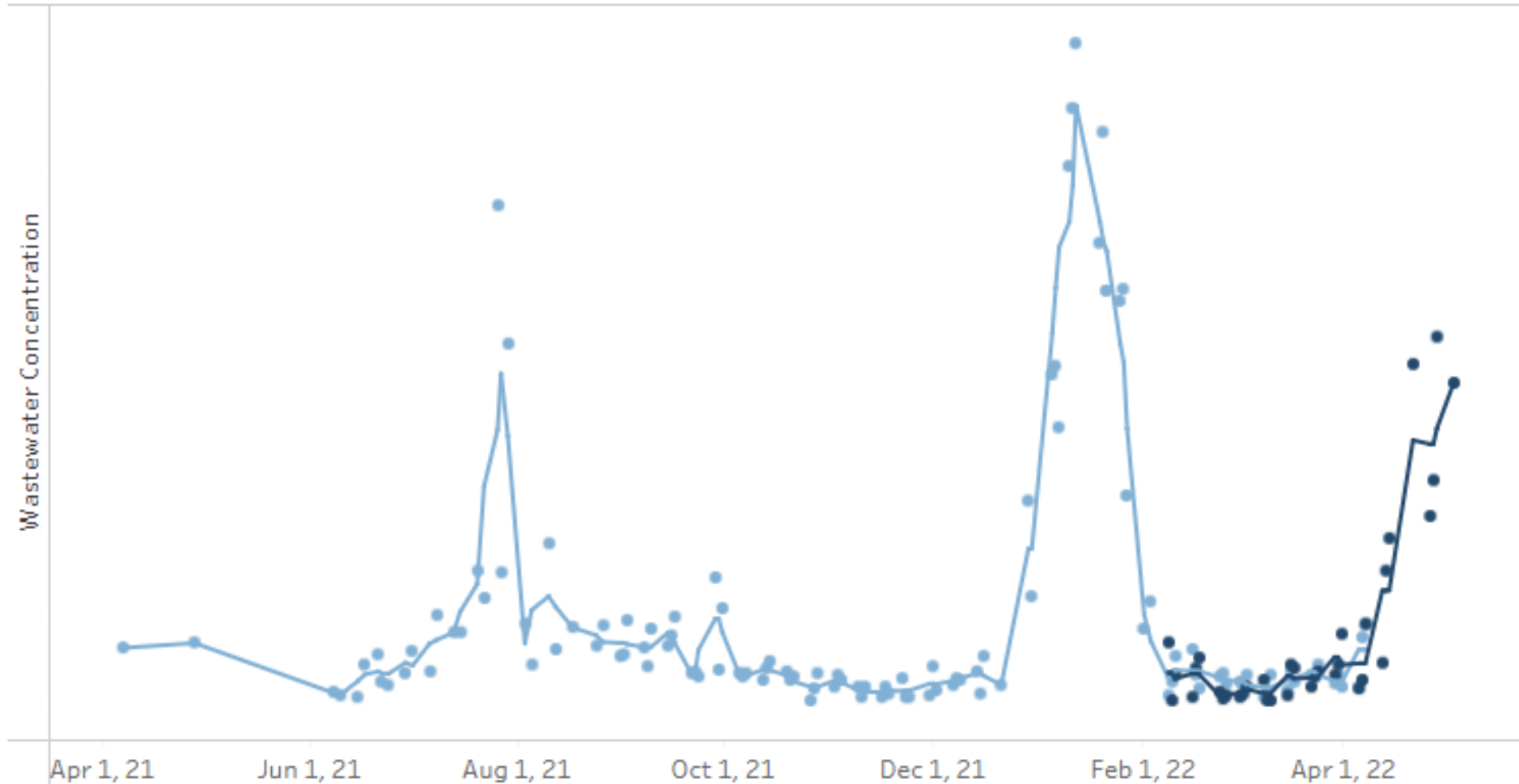


Includes City of Berkeley

Source: CalREDIE Data Distribution Portal download April 28, 2022

# Wastewater Monitoring to 5/3 – East Bay Municipal Utilities District

Data Source: CDPH Drinking Water and Radiation Lab & CDPH NWSS analyzed by University of CA, Berkeley



[Cal-SuWers Network Dashboard](#) accessed 5/9/22